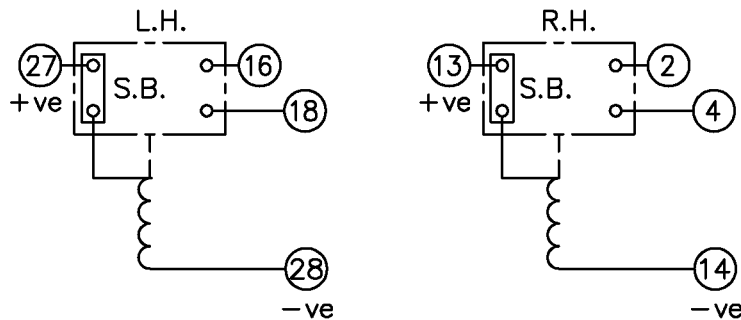


LOOKING ON FRONT OF RELAY

2112W50079



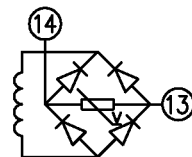
**NOT SUBJECT TO UPDATE
ONCE COPIED / PRINTED
OR DOWNLOADED**

KEY

- make contact
- break contact
- c/o contact
- ext. conn
- plug bridge - shorting
- metering point
- 5Kv barrier
- test socket - shorting
- plug & socket

CONTACT CONFIG.		OUTPUT CONTACT PAIR / TERMINAL No.					
R.H. →	L.H. →	1-3	2-4	5-7	6-8	9-11	10-12
1M 1SB		/	M	/	/	/	/
1B 1SB		/	B	/	/	/	/

NOTE: WHEN RECTIFIER IS SPECIFIED COIL CONNS. ARE AS SHOWN.



FRAME REFERENCE: E4FS09.

FRAME TERMINAL BLOCK ASSY: -

ASSEMBLY INSTRUCTIONS: -
TYPICAL ASSEMBLY DRAWING 2995G10032.
AT INDICATED POSITIONS FIT AS FOLLOWS:
T - FIT TRIP ISOLATION CONTACT 2995B10053
S - FIT STANDARD CONTACT 2995B10054
SECURE CONTACTS USING FIXING SCREW 2109F99009.
POSITIONS SHOWN BLANK ARE UNUSED

2	T		1
4	T		3
6			5
8			7
10			9
12			11
14	S	S	13
16	T		15
18	T		17
20			19
22			21
24			23
26			25
28	S	S	27

VIEW FROM NUMBERED SIDE OF BLOCK

OUTER TERMINAL BLOCK ASSY: -

ASSEMBLY INSTRUCTIONS: -
TYPICAL ASSEMBLY DRAWING 2995G10029.
AT INDICATED POSITIONS FIT AS FOLLOWS:
S - FIT STANDARD CONTACT 2995B10051
HC - FIT 'HEAVY CURRENT' KIT 2995G10030
WHERE IS SHOWN FIT CT SHORTING KIT 2995G10031
POSITIONS SHOWN BLANK ARE UNUSED.
ALL POSITIONS FIT SCREW 2106F12506.

2	S		1
4	S		3
6			5
8			7
10			9
12			11
14	S	S	13
16	S		15
18	S		17
20			19
22			21
24			23
26			25
28	S	S	27

VIEW FROM INSIDE FACE

Copyright © 2000 VA TECH Reyrolle Ltd. Hebburn

Title: T.B. AND W.D. FOR AR212SB 2 CONTACT RELAYS IN EPSILON E4 CASE.			First used on:		
VA TECH Reyrolle			Similar Articles:		
AUTOMATION, CONTROL & PROTECTION			Supersedes:		
3 RDW	16/01/04	MN112/2606	Original Scale:	Drg.No.	
2	12/04/00	MN995/09		2112W50079	
ISSUE	DATE	MOD.No.	DRAWN: A.LAW.		CHECKED:
APPROVED: R.D.WATSON		DATE: 17/07/02	IE:		OPS: